



MILESTONE

ENTERPRISES

About Us

Welcome to Milestone Enterprises, your premier partner in roofing excellence and reliable supply solutions. Established with a commitment to quality and innovation, Milestone Enterprises has become a trusted name in the roofing & interior industry.

Our Mission

At Milestone Enterprises, our mission is to redefine roofing & interior standards by delivering projects of superior quality, on time, and within budget. We aim to be the preferred choice for clients seeking excellence, reliability, and innovation in interior & roofing and supply services.

Contact Us:

8806823282 , 8459094149

Soffit Ceiling



Transform your space with Milestone Enterprises, a revolutionary soft ceiling solution designed to enhance acoustics and aesthetics. Crafted with precision, Milestone Enterprises combines functionality and style to create an environment of tranquility.



"For inquiries and collaboration, please contact us at 8459094149 , 8806823282"

Features



Fire Retardant



Maintenance Free



Anti-Bacterial



Easy to Install



Water Proof



Termite Proof



SOFFIT PANELS ARE THE NEW INNOVATION IN CEILING & WALL SYSTEMS



Our products are not just ceilings and walls; they are a testament to advanced acoustic engineering. Enjoy unparalleled sound absorption, eliminating echoes and ensuring a peaceful atmosphere in any environment.

Our products are not just functional; they are a canvas for your creativity, allowing you to curate a space that is truly yours.

Enjoy the benefits of acoustic comfort sooner, and relish in the lasting results of a space transformed with elegance.



"For inquiries and collaboration, please contact us at 8459094149 , 8806823282"

Featured Woods



GOLDEN OAK



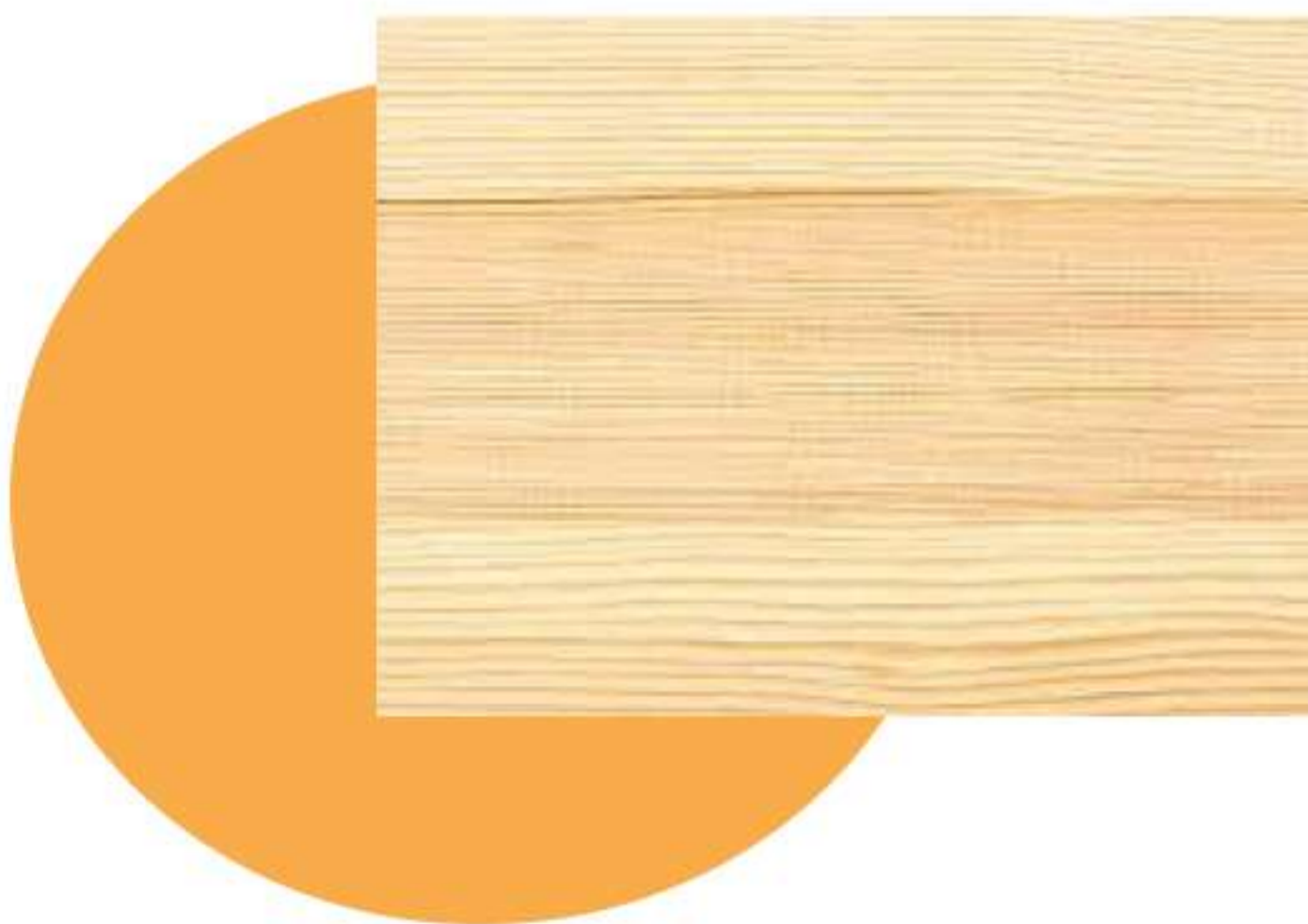
BRICH



Maple Wood



Walnut



Pine Wood



Weathered Grey

Soffit Panel & Profile Sizes



SOFFIT PANELS



J-TRIM

Perimeter Profile



T-TRIM

Connector Profile



**Sizing given in mm



Technical Declaration

Fire-Retardant

Soffit Panels have been specially designed to ensure that they do not promote fire.

Cold Resistance

Soffit and its accessories comply with cold duration test (-20 degrees) in accordance with IS 10151.

Anti-Bacterial

Soffit panels have certified anti-bacterial properties which destroys wide range of germs in very short span of time.

RELEVANT CODES AND REGULATIONS COMPLIANCES:

Conforms to ASTM Specifications D-4477

Colour: Uniformity is Spectrophotometrically Controlled.

Lock: Optically Measured and Controlled.

PRODUCT TEST DATA :

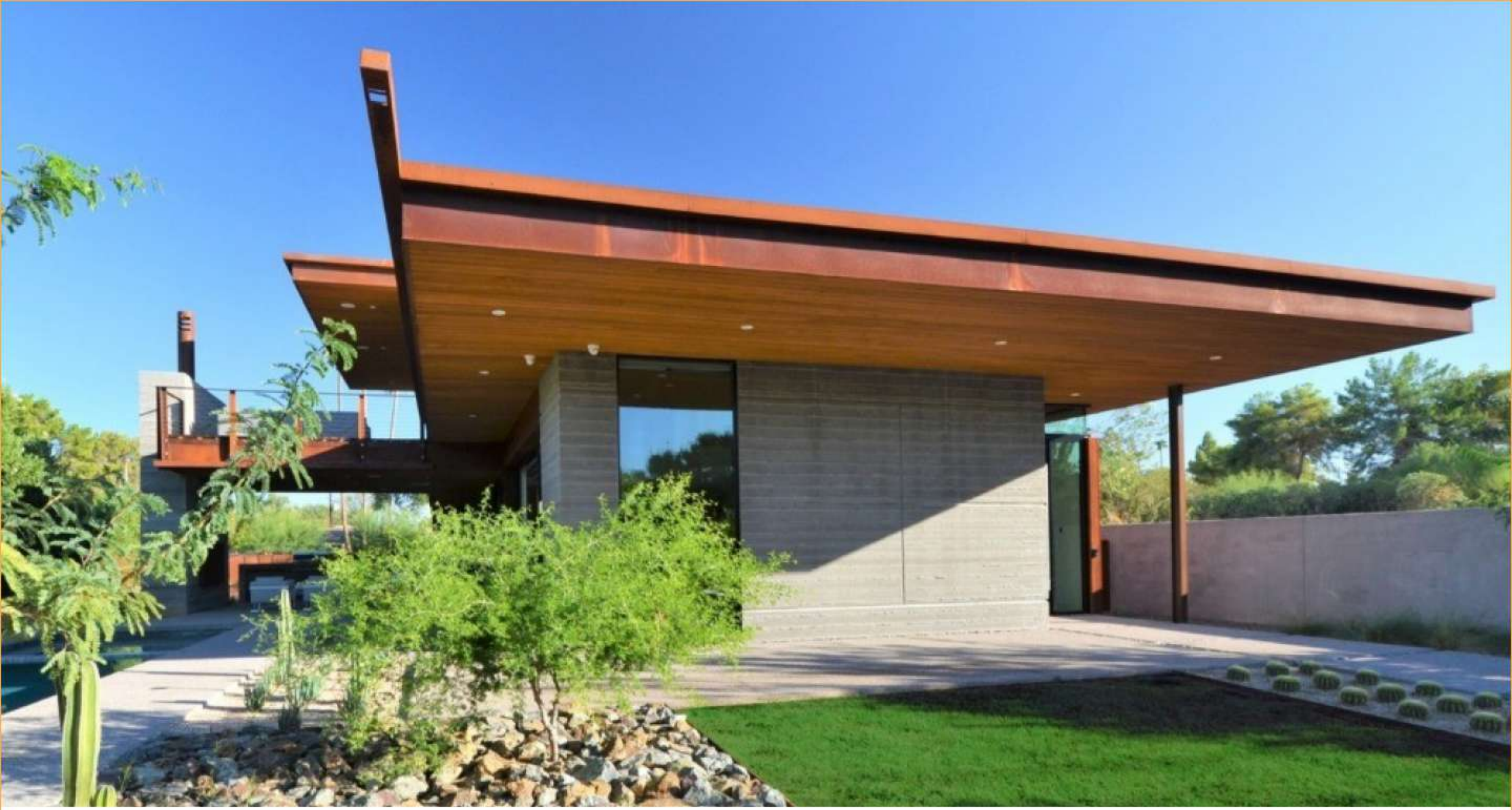
TESTS	RESULTS
Impact resistance	No deformation observed. [Tested at 50LBS]
Tensile strength, MPa:	>37.0
Tensile modulus, MPa:	>2000
Surface distortion	None at 120F
Length :	Within ¼" of specification
Lock control:	Complies
Colour change:	<2 greyscale [16hrs under 1200W/m ² UV radiation at 50 degrees]
Squareness	<1/8" of square

DECLARED PERFORMANCE:

ESSENTIAL CHARACTERISTIC	PERFORMANCE
Reaction to fire EN 13501-1	D-s3;d0
Release of dangerous substance	NPD
Durability	A.4.65

HARMONISED TECHNICAL SPECIFICATION

EN 13245-2:2009/AC:2010



WE OFFER CUSTOM SIZE

**We require only 5000 sq.ft of a
single size to give you the benefit
of custom sizing**

YOU IMAGINE IT. WE'LL MAKE IT!

Any Length Is Possible



WE MAKE IT !!!!

"For inquiries and collaboration, please contact us at 8459094149 , 8806823282"

High-Pressure Laminate



Elevate your spaces with our premium High-Pressure Laminate (HPL) – a versatile and stylish solution that combines durability, aesthetics, and functionality. Crafted with precision, our HPL products are designed to meet the demands of modern architecture, offering a wide range of applications for both residential and commercial settings.



"For inquiries and collaboration, please contact us at 8459094149 , 8806823282"

Features



UV Resistant



Double Side Decorative



Scratch Resistant



Easy to Install

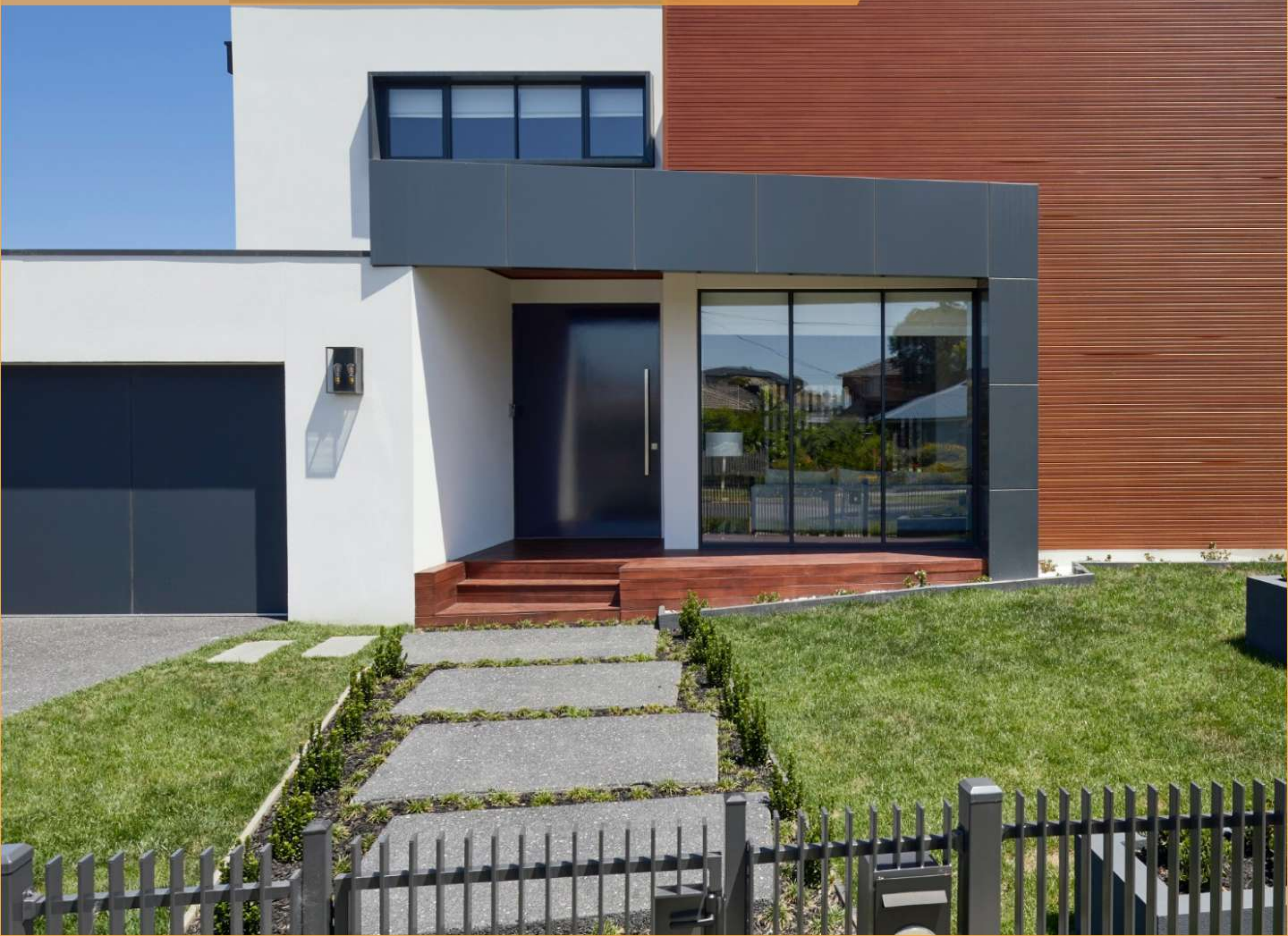


Moisture Control



Impact Resistant

Woodgrains & Stones



Featured Woods



Pretty Wood



Cherry Beech



Mahogany



Emerald Walnut



Tyrol Pine



Nayana Teak

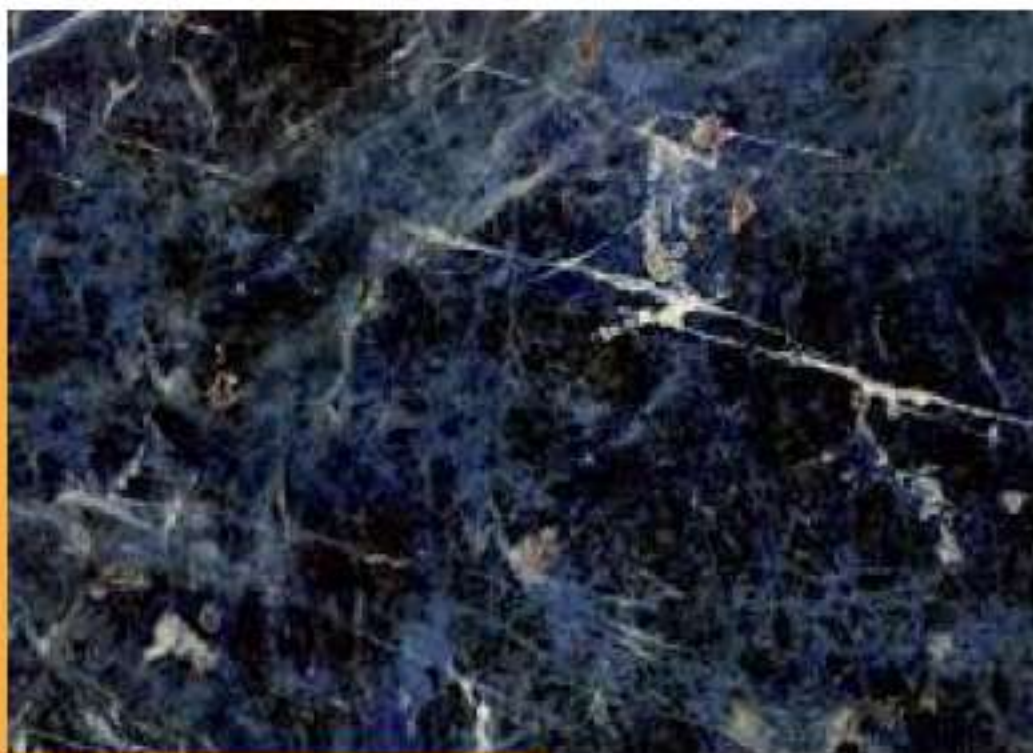
Featured Stones



Tula Silver



Gris Reyra



Blue Lapis



Gure Visgrat



Gothic Marble



White Marble

STORAGE & HANDLING

- Store in a dry, clean, frost-free room.
- CenturyExteria HPL sheets must be stacked horizontally.
- A levelled surface which provides full and uniform support to the pallets on which CenturyExteria HPL sheets are placed during storage, should be made available.
- Dirt, dust or any abrasive material in any form must always be avoided on or between CenturyExteria HPL sheets.
- Keep CenturyExteria HPL sheets in the original, closed packaging where possible.
- Do not place any moisture-sensitive separator layers between the Century Exteria HPL sheets. If required, use plastic sheets as intermediate layer.
- Treat CenturyExteria HPL sheets with care. Suitable protective hand gloves must always be worn while handling.
- Century Exteria HPL sheets should not be slid over another or pushed/pulled over edge while they are being carried or loaded. During transportation always lift the sheets.
- The peel off film should be ideally removed within 14 days of installation of the panels.

CARE AND MAINTENANCE

- Century Exteria HPL panel surfaces can be cleaned with a damp cloth and mild detergent (baby shampoos, liquid dish washing detergents, liquid soaps etc.). After cleaning, a thorough rinsing and drying is required.
- Any kind of abrasive cleaner, powder, scouring pad, steel wool, chisel, sandpaper, brush having hard rigid bristles etc. should never be used; this can leave permanent scratch marks on the laminate and irreversibly damage the finish.
- Don't use any strongly acidic or alkaline based solvent, bleach, heavily chlorinated product or furniture polish as cleaning agent; these agents can discolour the UV protective film on the panel.
- Any solvents having polyurethane lacquer, paint thinner and nail polish remover must not be used, as these solvents can have adverse effects on the UV protective film.

6. Technical Data Sheet

Dimensional Tolerances

Based on Standard	Based on Standard EN 438-2	Property or Attribute	Unit (max or min)		HGS
Thickness	EN 438-2:5	Thickness	mm (max)	$0,5 \leq t \leq 1,0$	$\pm 0,10$
				$1,0 < t < 2,0$	$\pm 0,15$
Flatness	EN 438-2:9	Flatness	mm (max)		≤ 60
Length and Width	EN 438-2:6	Length / Width	mm		$+ 10 / - 0$
Straightness of edges	EN 438-2:7	Straightness of edges	mm (max)		$\leq 1,5$
Squareness	EN 438-2:8	Squareness	mm (max)		$\leq 1,5$

General Requirements

Based on Standard	Based on Standard EN 438-2	Property or Attribute	Unit (max or min)		20
Resistance to impact by small diameter ball	EN 438-2:20	Spring Force	N (min)		≥ 20
Resistance to impact by large diameter ball	EN 438-2:21	Drop Height	mm (min)		≥ 800
		Indent Diameter	mm (max)		≤ 10
Dimensional stability elevated temperature	EN 438-2:17	Cumulative dimensional change	% (max)	Longitudinal	$\leq 0,55$
				Cross - longitudinal	$\leq 1,05$
Density	ISO 1183:1987	Density	g/cm ³		$\geq 1,350$

Surface Requirements

Based on Standard	Based on Standard EN 438-2	Property or Attribute	Unit (max or min)		20
Resistance to surface wear	EN 438-2:10	Wear resistance	Revolutions (min)	Initial wear	150
				Wear Value	350
Resistance to scratching	EN 438-2:25	Force	Rating (min)		3
Resistance to immersion in boiling water	EN 438-2:12	Visual Appearance	Rating (min)		4
Resistance to wet heat (100 ° C)	EN 12721 : 1997	Visual Appearance	Rating (min)		4
Resistance to water vapour	EN 438-2:14	Contrast	Rating (min)		4
Light Fastness (xenon arc light)	EN 438-2:27	Visual Appearance	Grey scale rating		Min 4
Resistance to cigarette burns	EN 438-2:30	Visual Appearance	Rating (min)		3

Rubber Tiles



Introducing our premium rubber tiles - a perfect synergy of durability, safety, and aesthetic appeal. Engineered to meet the demands of modern spaces, our rubber tiles offer a versatile solution for a wide range of applications, creating surfaces that are not only visually striking but also resilient to wear and tear.



"For inquiries and collaboration, please contact us at 8459094149 , 8806823282"

Features



Highly Durable



Slip Resistance



Easy to Install



Water proof



Impact Resistant

Wooden Flooring



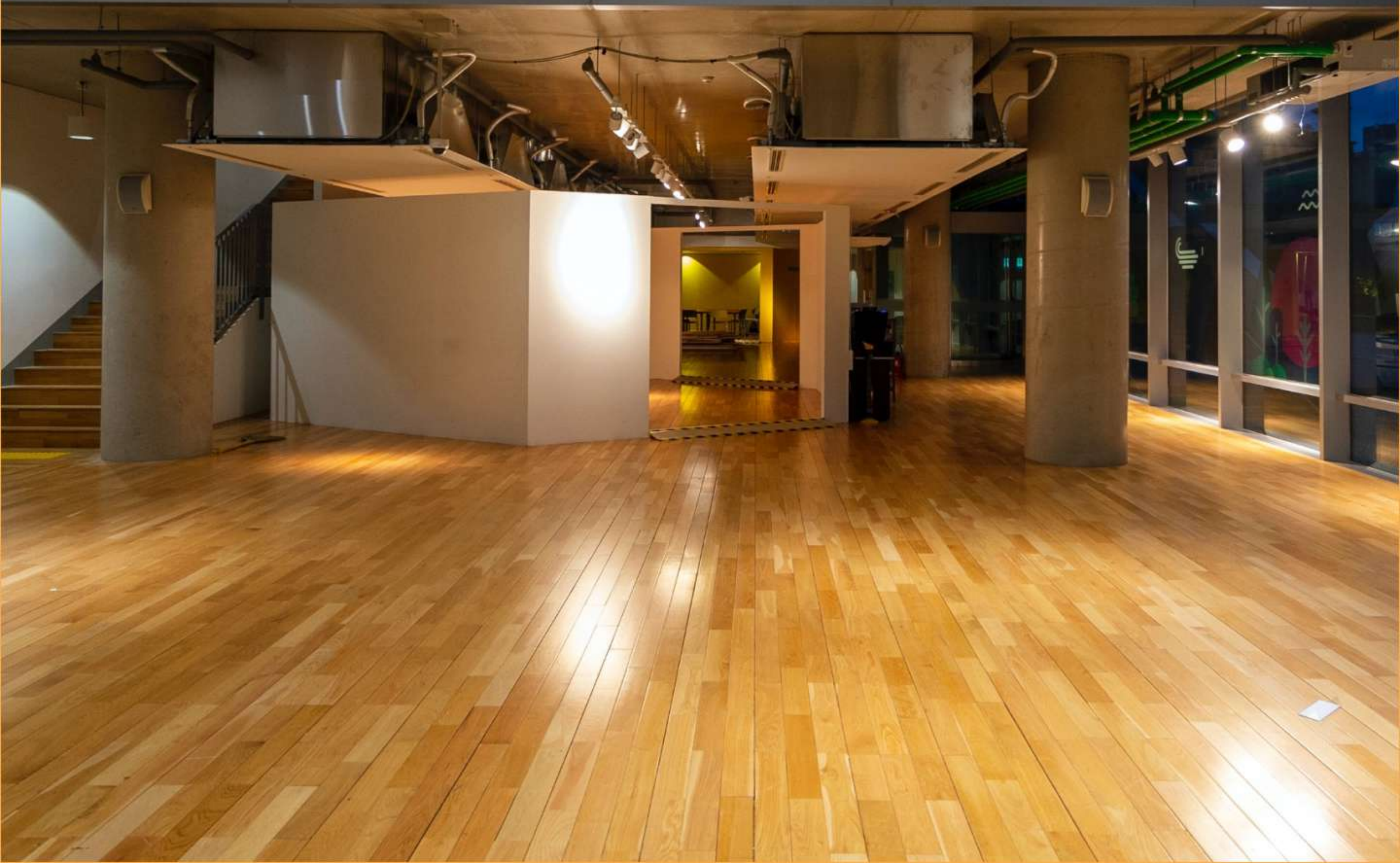
Experience the epitome of sophistication with our exquisite wooden flooring. Crafted from premium hardwood, our flooring seamlessly combines timeless elegance and modern durability. Transform your space into a haven of warmth, character, and enduring beauty with our diverse range of wood finishes.



Milestone
Enterprises

"For inquiries and collaboration, please contact us at 8459094149 , 8806823282"

Wooden Flooring Types

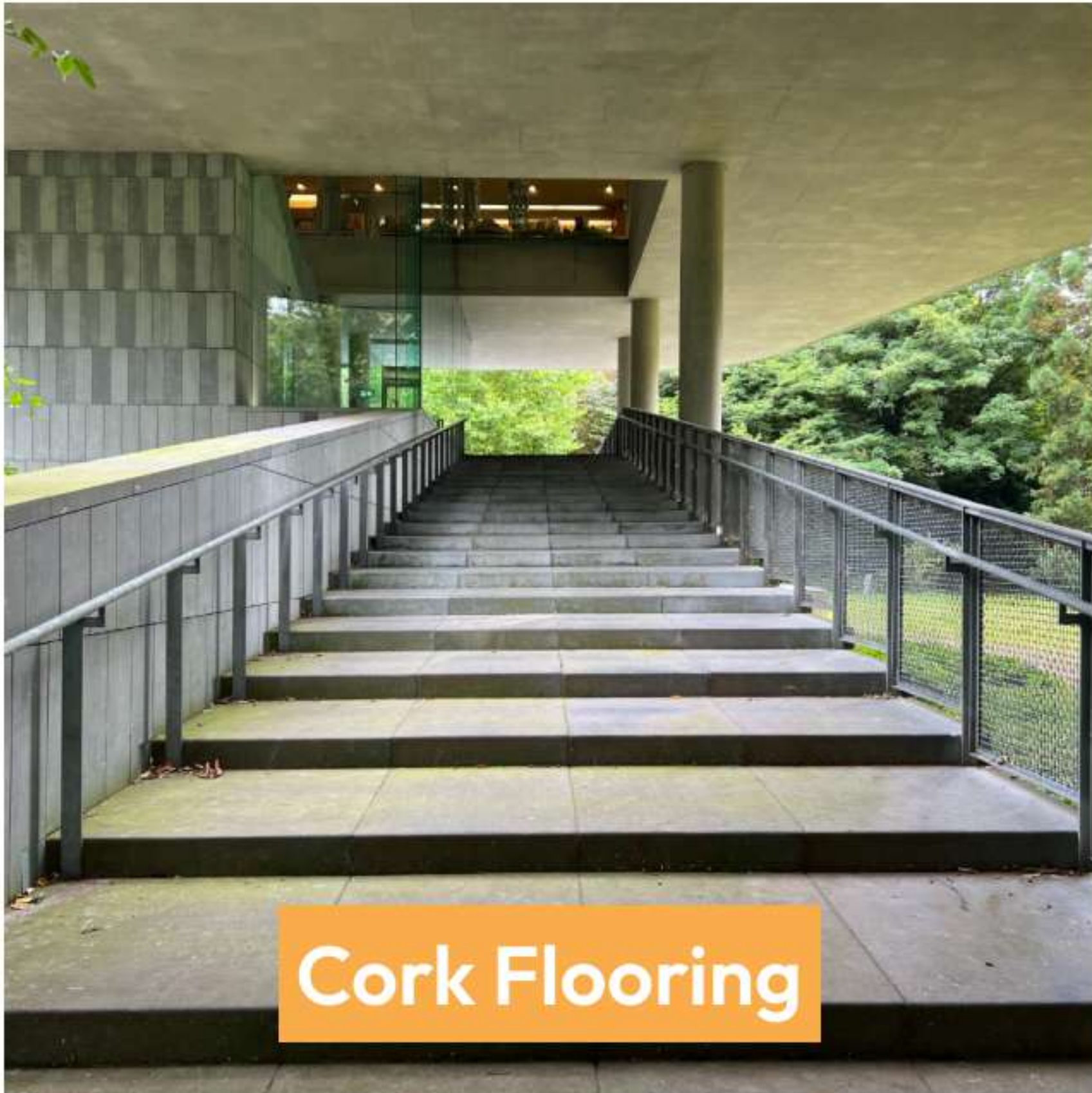




Wooden Flooring



Laminate Flooring



Cork Flooring



Hardwood Flooring

Featured Woods



Herring Bone



Bamboo



Engineered



French bleed



Hardwood



Fish Bone

Aluminum Composite Panel



Aluminum Composite Panels (ACPs) are a revolutionary building material that combines the durability of aluminum with the flexibility of a polyethylene core. This composite structure results in a lightweight yet robust panel, ideal for a myriad of architectural applications.



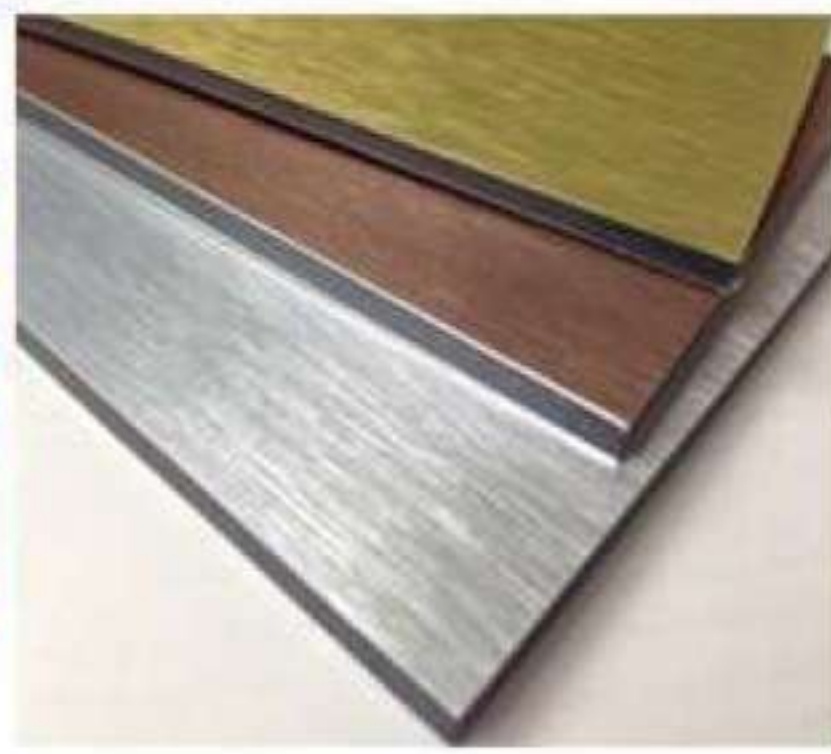
"For inquiries and collaboration, please contact us at 8459094149 , 8806823282"

Solid Metallic Premium Series





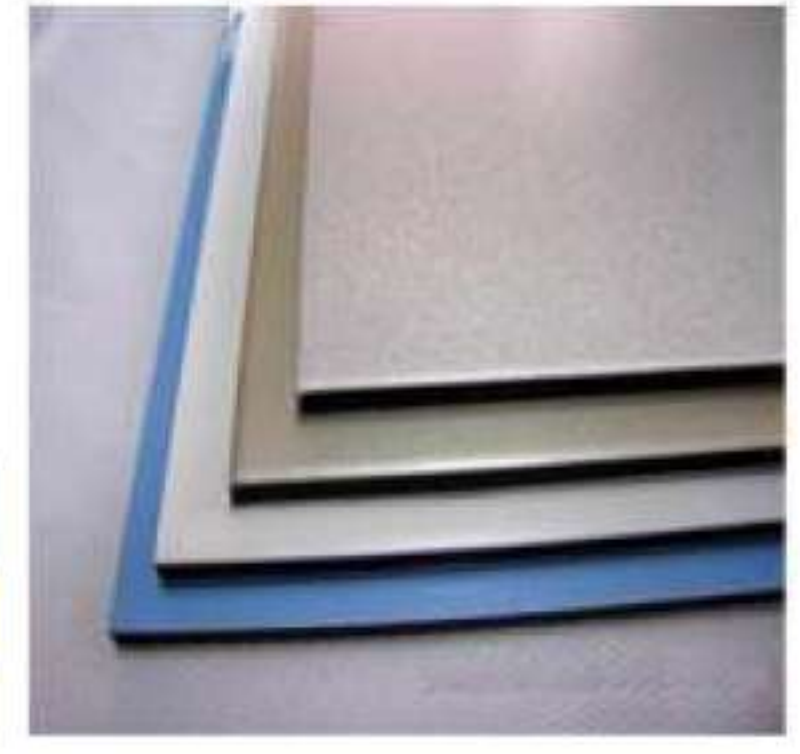
Matte Color



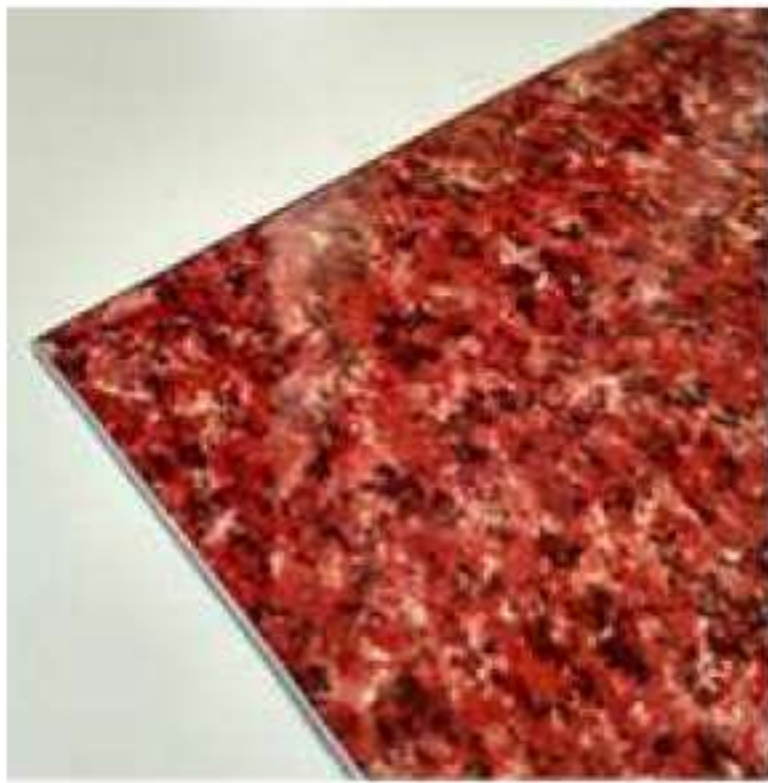
Brushed Series



High Glossy



Metallic Series



Marble/Granite



Mirror Surface



Wooden Texture



Pearl Series



"For inquiries and collaboration, please contact us at 8459094149 , 8806823282"

Awning / Tensile



Tensile Fabric Awnings, a perfect blend of architectural innovation and aesthetic excellence. Engineered to redefine outdoor spaces, these awnings combine the strength of high-tensile fabrics with cutting-edge design, providing shade solutions that are as stylish as they are functional.



"For inquiries and collaboration, please contact us at 8459094149 , 8806823282"

Specifications

F-700

Support Cloth	Multifilament Polyester	DIN 60001
Coating	PVC both sides lacquered + PVDF	
Total Weight	730 g/m ²	DIN EN ISO 2286 -2
Width	300 cm	DIN EN ISO 2286 -1
Tensile Strength (Warp/Weft)	3000 N/5 cm	DIN EN ISO 1421
Tear Resistance	350/350 N	DIN 53363
Adhesion	100 N/5 cm	DIN 53357
Light Transmission	~ 10 %	White 415
Flame Retardancy	B-s2,d0	EN 13501 -1
Fabrication	High Frequency Weldable	
Application & Warranty	10 years*	
	PFOA - free	<ul style="list-style-type: none">■ Certifications, Labels, Warranty. ISO 9001 ISO 14001 ISO 50001

Roofing Shingles



Introducing our premier Roofing Shingles, a fusion of durability, style, and weather resistance. Engineered to withstand the elements and add architectural charm to any home, our shingles are the epitome of roofing excellence.



"For inquiries and collaboration, please contact us at 8459094149 , 8806823282"

Starter Singles

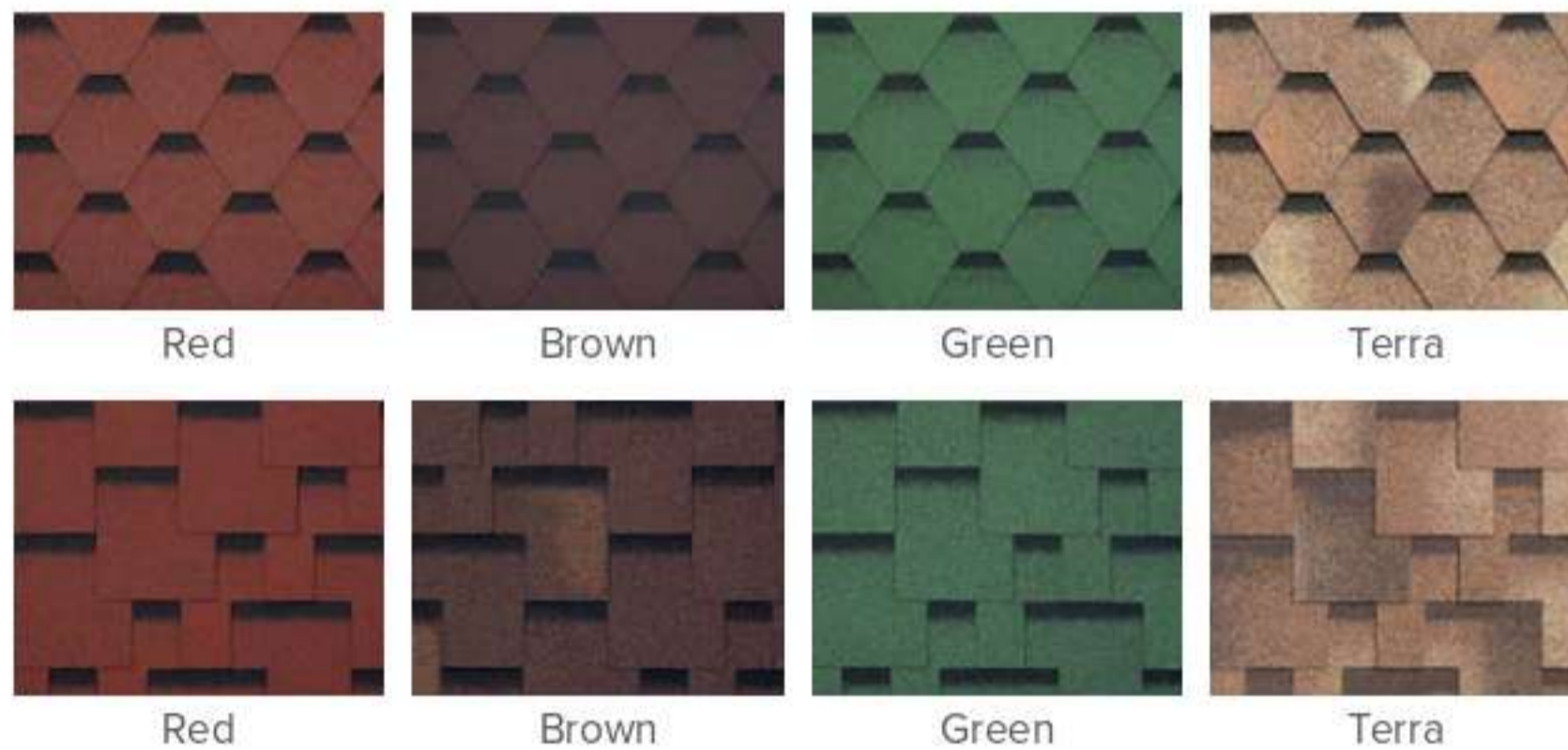


Hip & ridge & starter shingles produced with SBS modified bitumen are extremely flexible. These pre-cut shingles can be separated into three smaller pieces for further application on hips and ridges to add the perfect aesthetic finish to your roof. Maximum protection against wind, snow and rain is provided. Available in a wide range of colors to match any chosen roofing color solution.

Dimensions: 1 m x 0.25 m

Package: 12 lin. m (hips & ridge) and 20 lin. m (starter strip).

Classic Singles



Metal Shingles



A harmonious marriage of aesthetic excellence and exceptional durability. Elevate your roofing experience with a solution that seamlessly combines timeless design with the strength of metal, ensuring a roof that not only protects but also enhances the beauty of your home.

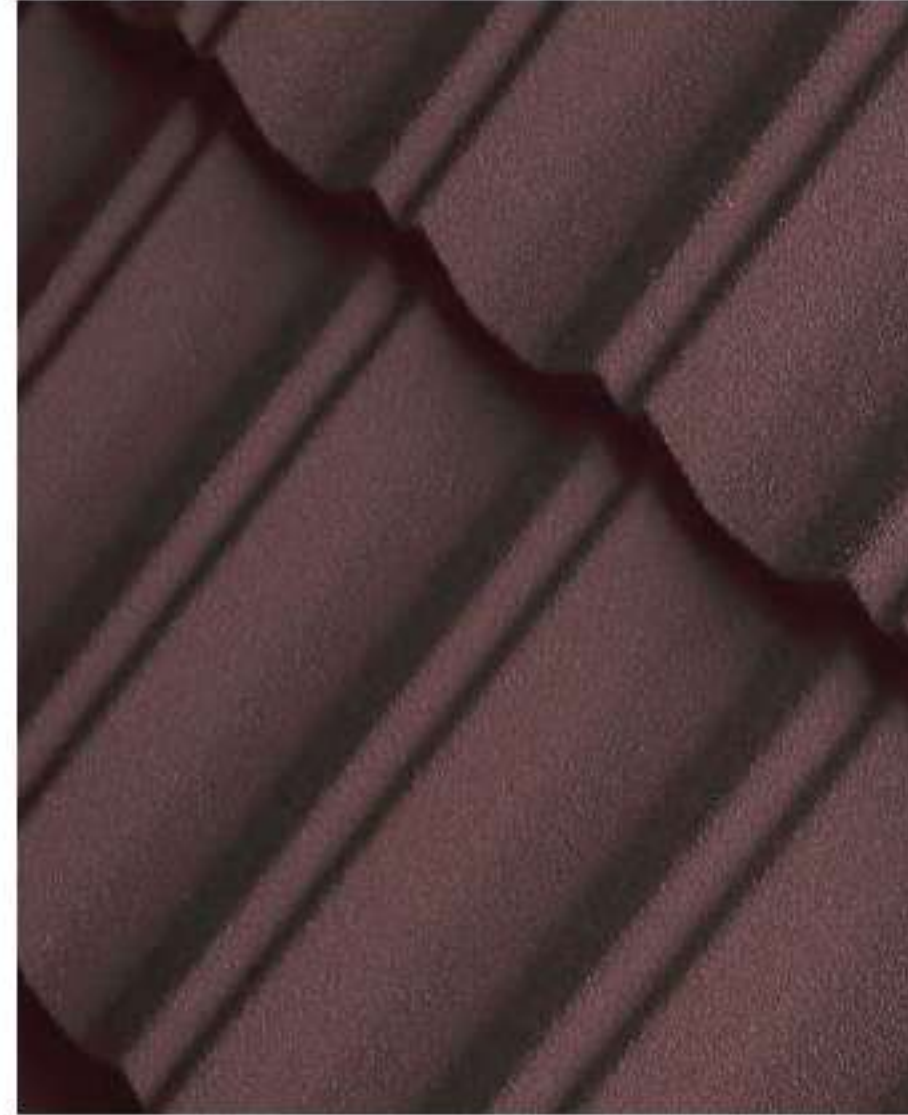


"For inquiries and collaboration, please contact us at 8459094149 , 8806823282"



STONE-COATED METAL ROOF TILES

Types Of Stone Tiles



Collection Of Colors



Charcoal



Brick Red



Granite Black



Desert Brown

Polyurethane Foam (PUF) Insulation



a cutting-edge solution that revolutionizes the way we approach comfort and energy efficiency in buildings. With its exceptional thermal insulation properties, PUF sets a new standard for sustainable, cost-effective, and environmentally conscious insulation solutions.

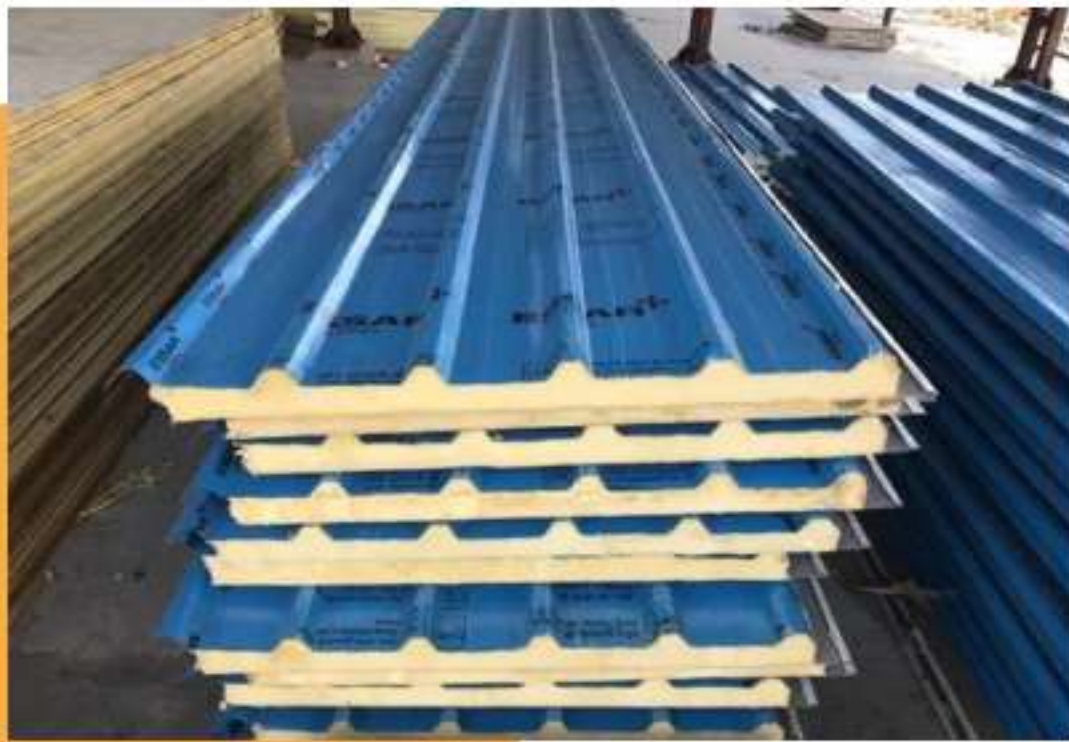


"For inquiries and collaboration, please contact us at 8459094149 , 8806823282"

Details

DENSITY	COMPRESSIVE STRENGTH	FLEXURAL STRENGTH (flatwise with grain) (psi)	TENSILE STRENGTH (with grain) (psi)	MODULUS OF ELASTICITY (psi)	CLOSED CELL CONTENT (%)	TEMPERATURE (F) CONTINUOUS OPERATION	K-FACTOR	THERMAL CONDUCTIVITY (btu/hr m ² of)	SHEAR (flatwise 1/8" thk. Psi)	DENSITY (lb/in ³)	WATER ABSORPTION (%)
PUF (10lb/cuft)	200.00	400.00	300.00	6,000.00	95.00	-300.00	0.08	0.1600	180.00	0.1157	0.22
PUF (14lb/cuft)	300.00	600.00	500.00	11,000.00	95.00	-300.00	0.12	0.2000	200.00	0.1736	0.18
PUF (20lb/cuft)	500.00	1,100.00	600.00	20,000.00	95.00	-300.00	0.14	0.2500	400.00	0.2893	0.13

Products



Polyurethane Wall



Polyurethane Foam

Monier Concrete Tiles



Concrete tiles are a type of flooring or roofing material made from a mixture of cement, sand, and water. These tiles are versatile and can be used in various applications due to their durability, strength, and design flexibility.



"For inquiries and collaboration, please contact us at 8459094149 , 8806823282"

Premium Collection



Roman



Plana



Coppo Domus



S-Pantile



Flexa

Artificial Thatch Roof



Introducing our Artificial Thatch Roofing, a revolutionary solution that combines the timeless charm of traditional thatch with the durability and sustainability of modern materials.



Milestone
Enterprises

"For inquiries and collaboration, please contact us at 8459094149 , 8806823282"



Artificial Thatch Roofing Variety



Poly Carbonate Sheet



A cutting-edge solution for a wide range of applications, renowned for their exceptional strength, clarity, and versatility. Whether used in construction, signage, or DIY projects, these sheets offer a durable and transparent alternative to traditional materials.



"For inquiries and collaboration, please contact us at 8459094149 , 8806823282"



Poly Carbonate Sheet Variety



Thank You



Contact Us:

8806823282 , 8459094149

🌐 MILESTONEENTERPRISES.IN

✉ info@milestone.in

PLOT NO.170, GAROBA MAIDAN, TELEPHONE
EXCHANGE SQUARE, NAGPUR, MH-440008



Milestone
Enterprises